

XP

GENERAL

Standard specification type purgometer adopted engineering plastic integrated mold body. Smart and compact design. Quick delivery and low cost contributing to cost-down.

MAJOR APPLICATIONS

General purpose, quick delivery

STANDARD SPECIFICATION

Measuring object	Liquids and gases	
Measuring range	Gas	Min. 0.1~1 L/min (nor). Max. 2~20 L/min (nor).
	Water	Min. 0.02~0.1 L/min. Max. 0.2~1.0 L/min.
Range ability	10:1	10:2 occasionally
Accuracy	± 5%F.S.	
Max. Op. Press.	0.5MPa	
Max. Op. Temp.	50°C	
Material	Std.	
Body	Body	POM(Poly-acetals) Engineering plastic integrated mold
	Tapered tube	Pyrex glass
	Packing	FPM
	Cover	Poly-carbonate
Connection	Std.	Rc1/4 Refer to Basic model code for details.
	Opt.	
Mounting	Std.	Thread mount onto panel front Refer to Dimension for details.
	Opt.	
MASS (std. type)	0.1 kg	

ALARM OUTPUT

Type	Availability	Reference pages
Reed switch type alarm unit	General	×
	CE, UL Version	×
PAU Optical alarm unit	○	Refer to page 50.
Optical alarm unit	×	

OTHER AVAILABLE OPTIONS

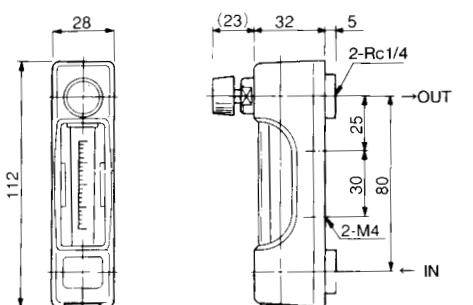
You can specify the following options:
Variable type on the front of alarm contact, special graduation, built-in rubber joint type, built-in joint type, etc.
(For details, refer to ⑥ Other Option and One-Point Advice on page 55).

Standard Material

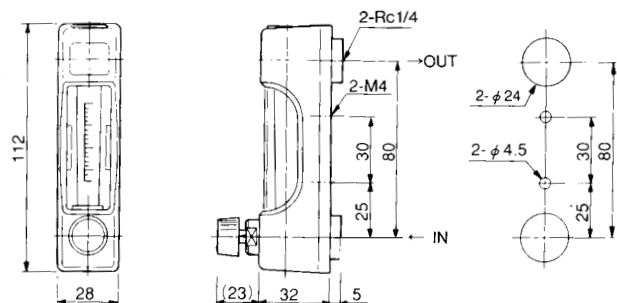
Parts name	Standard material	Available material
Body	Poly-acetals	—
Tapered tube	Pyrex glass	—
Float	SUS316/Glass	—
Packing	FPM	—
Valve	Poly-acetals	—
Cover	Poly-carbonate	—

Parts whose names are described in **bold letters** are in contact with fluids to be measured.

DIMENSIONS



Gas use (XP-G□-U0)



Liquid use (XP-L□-L0)

PANEL CUT

ORDERING INFORMATION

Basic model code	Designation items for detailed specifications (Only when customer designation graduation)
XP-□□-□□	① Fluid name — ② Measuring range — ③ Press. — ④ Temp. — ⑤ Mounting Option — ⑥ Other Option
(Use model code table for selection)	(For specification procedure, refer to page 52)



BASIC MODEL CODE

SERIES NAME	FLOW RANGE	VALVE	ALARM OUTPUT	EXAMPLE	DESCRIPTION	
XP-	L1	-I	o			
	FLOW RANGE	VALVE	ALARM OUTPUT	0	Not provided	
				E	PAU ALARM UNIT provided	Refer to page 50.
				0	Not provided	Refer to valve position selection guide (Page 56).
				L	Bottom (gas for atmospheric pressure scale)	
				U	Top (gas for pressure scale or for negative pressure on the secondary side)	
	L1			0.02~0.1 L/min		
	L2			0.04~0.2 L/min		
	L3	Water		0.06~0.3 L/min		
	L4			0.1~0.5 L/min		
	L5			0.2~1.0 L/min		
	G1			0.1~1 L/min (nor)	The notation of the fluid name of Tapered tube is Gas.	
	G2			0.3~3 L/min (nor)		
	G3	Gas		0.6~6 L/min (nor)		
	G4 (Air)			1.0~10 L/min (nor)		
	G5			2.0~20 L/min (nor)		
	00	Customer designation graduation			Refer to Designation items for detailed specifications in page 52.	